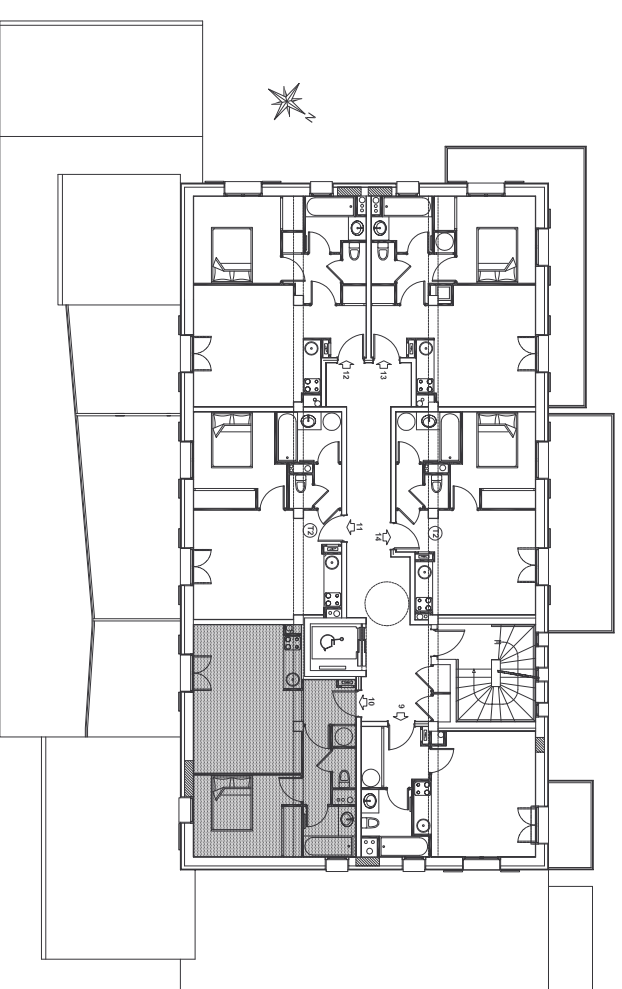
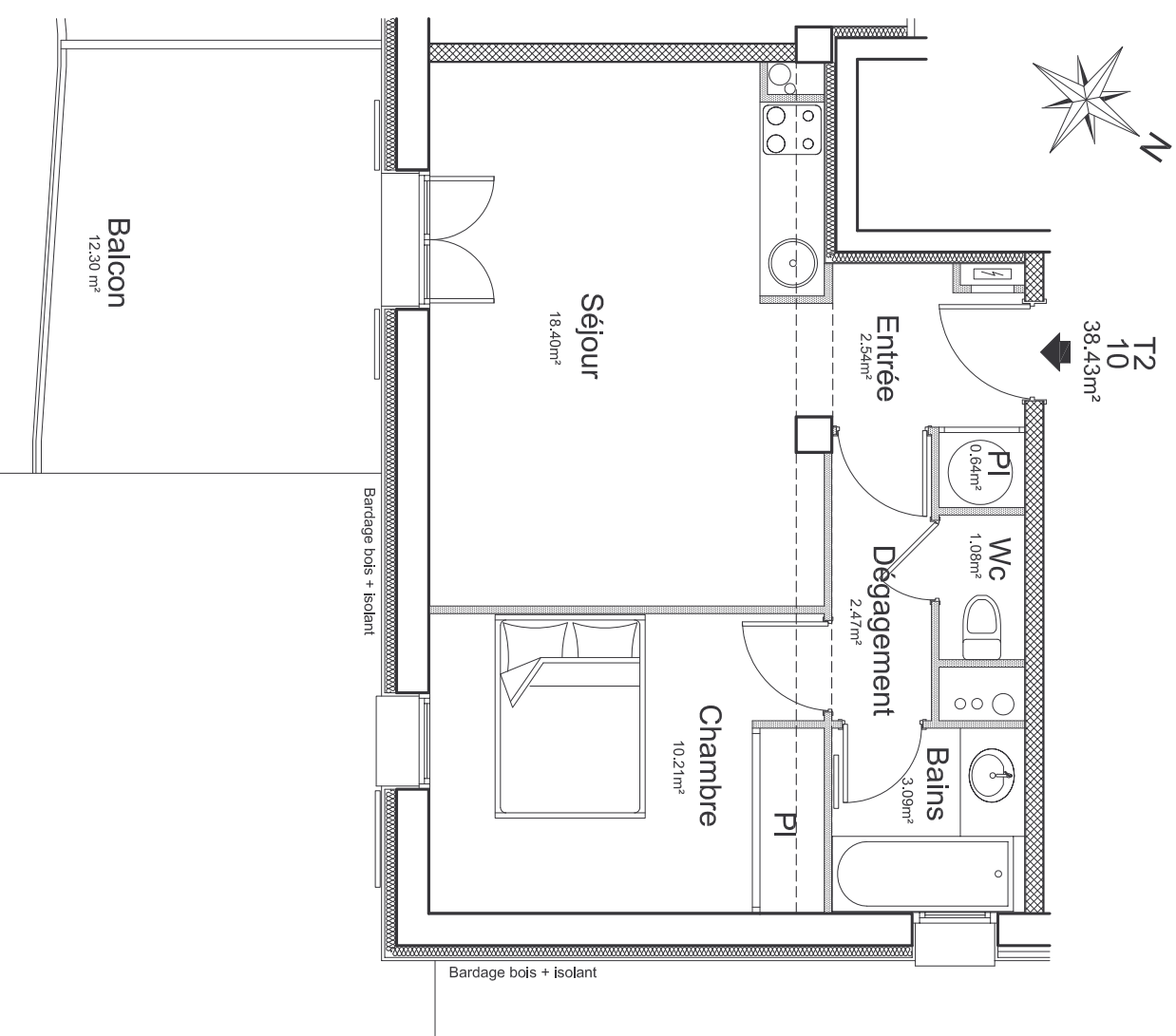


Chalet	Logement 10
Perce-neige	
1er Etage	T2

TABLEAU DES SURFACES

1er Etage	Habitable	Annexes
Entrée	2.54 m ²	
Séjour cuisine	18.40 m ²	
Chambre	10.21 m ²	
Salle de bains	3.09 m ²	
WC	1.08 m ²	
Dgt	2.47 m ²	
Placard	0.64 m ²	
Balcon		12.30 m ²
Total	38.43 m²	12.30 m²



LOCALISATION BATIMENT

RESIDENCE DE TOURISME***

Le Pla d'Adet

65170 Saint Lary Soulan