

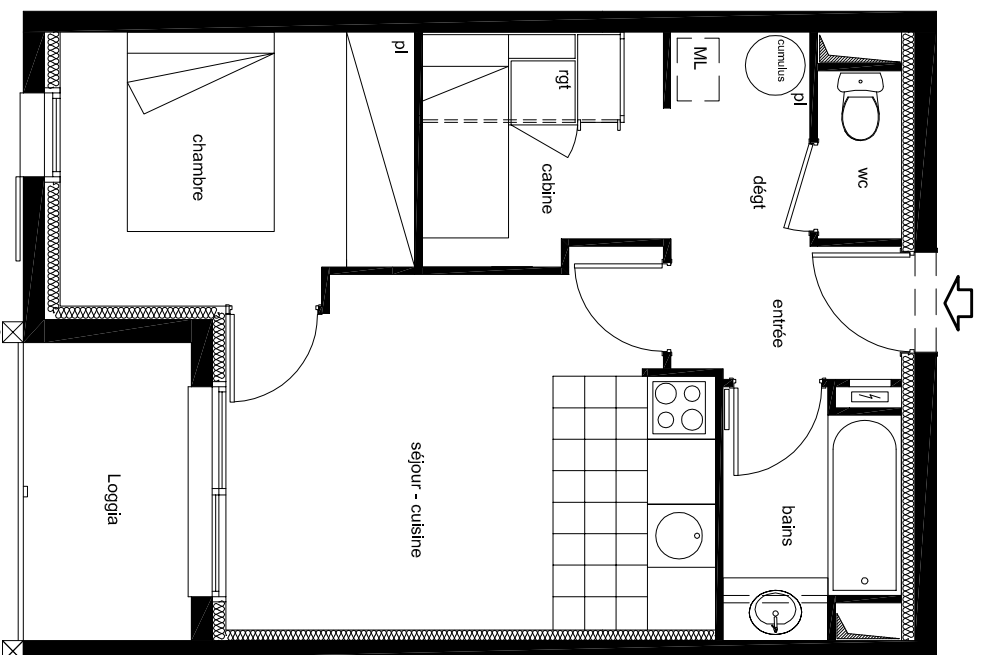


**SOCALIM**  
I M M O B I L I E R

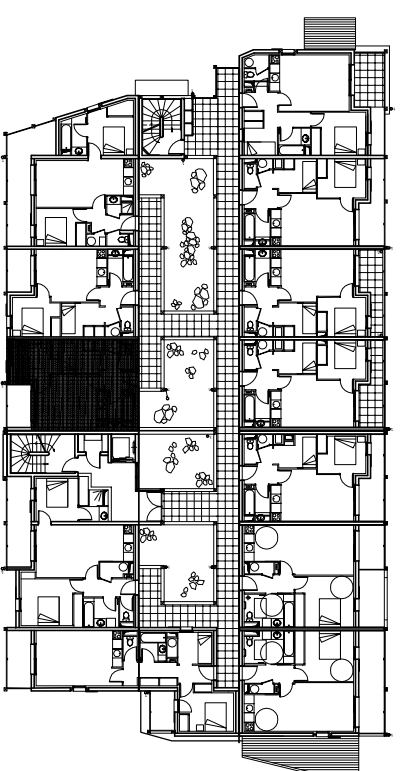
**LAGRANGE**  
Patrimoine

**RESIDENCE**  
**Le Clos St Hilaire**  
65170 Saint Lary Soulan

Niveau R+1	Logement 100
Indice I 05 Novembre 2008	Type 2C



	Habitable	Annexes
Séjour-cuisine	15.20m <sup>2</sup>	
Chambre	8.26m <sup>2</sup>	
Cabine	5.13m <sup>2</sup>	
Entrée	2.75m <sup>2</sup>	
Dégagement	2.72m <sup>2</sup>	
Salle de bains	3.52m <sup>2</sup>	
WC	1.28m <sup>2</sup>	
Loggia		4.54m <sup>2</sup>
<b>Total</b>	<b>38.86m<sup>2</sup></b>	<b>4.54m<sup>2</sup></b>



**LOCALISATION**

