

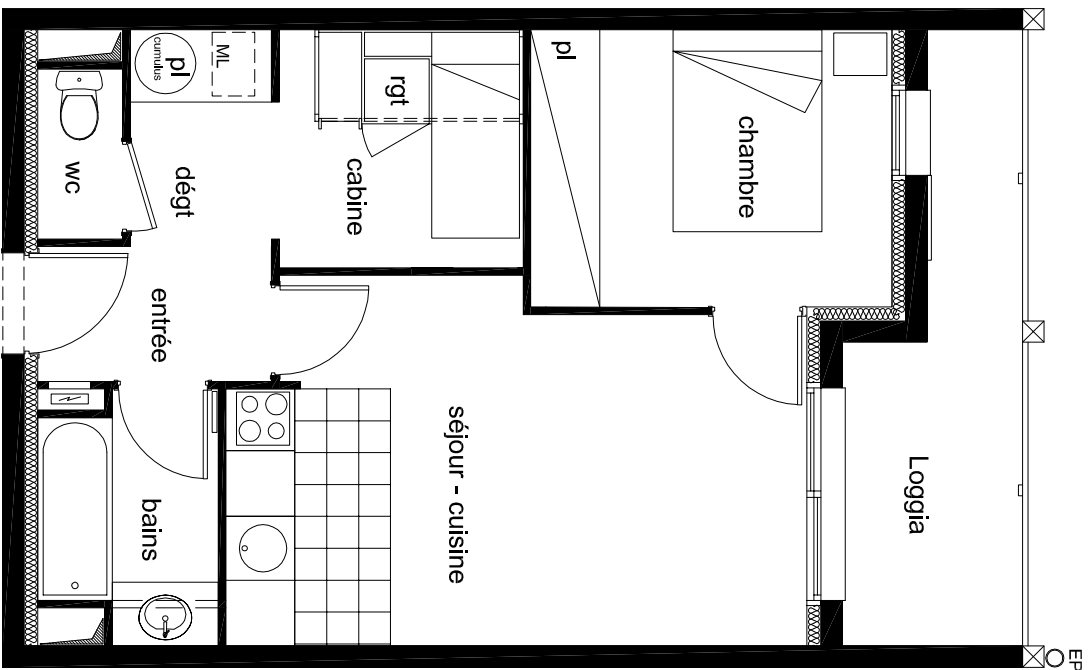


SOCAIM
IMMOBILIER

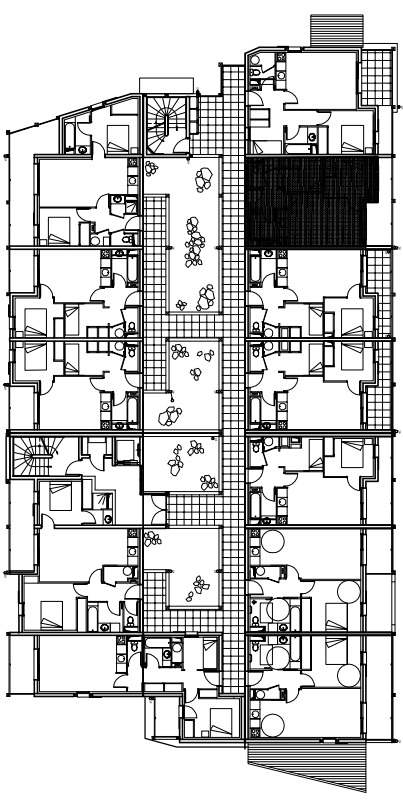
LAGRANCE
Patrimoine

RESIDENCE
Le Clos St Hilaire
65170 Saint Lary Soulan

Niveau R+1	Logement 104
indice I 05 Novembre 2008	Type 2C



	Habitable	Annexes
Séjour-cuisine	17,43m ²	
Chambre	8,84m ²	
Cabine	5,15m ²	
Entrée	2,79m ²	
Dégagement	2,71m ²	
Salle de bains	3,62m ²	
Wc	1,28m ²	
Loggia		7,50m ²
Total	41,82m²	7,50m²



LOCALISATION

