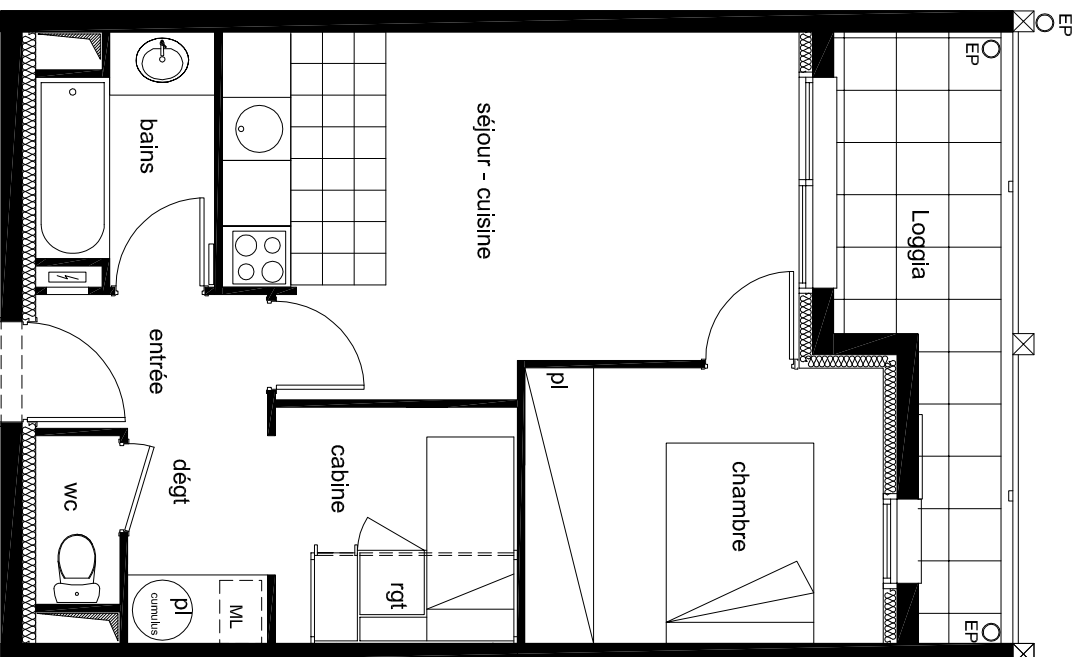




SOCAIM
IMMOBILIER

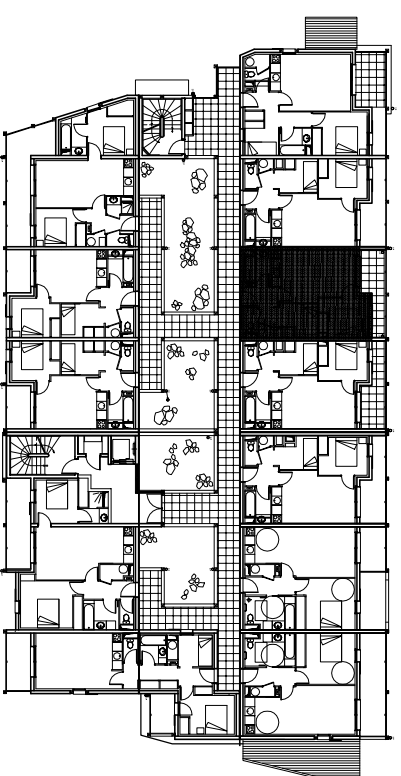
LAGRANGE
Patrimoine



RESIDENCE
Le Clos St Hilaire
65170 Saint Lary Soulan

Niveau R+1	Logement 105
indice I 05 Novembre 2008	Type 2C

	Habitable	Annexes
Séjour-cuisine	17.43m ²	
Chambre	8.84m ²	
Cabine	5.15m ²	
Entrée	2.79m ²	
Dégagement	2.71m ²	
Salle de bains	3.62m ²	
Wc	1.28m ²	
Loggia		7.50m ²
Total	41.82m²	7.50m²



LOCALISATION

