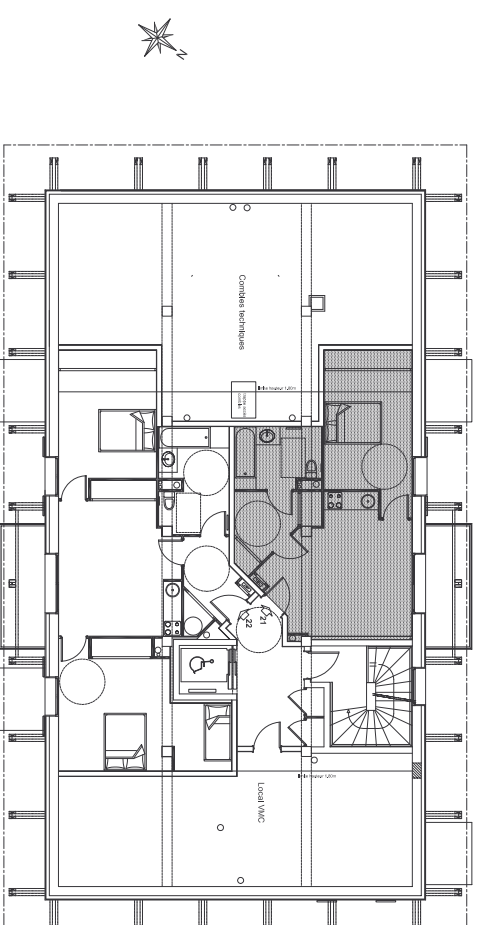
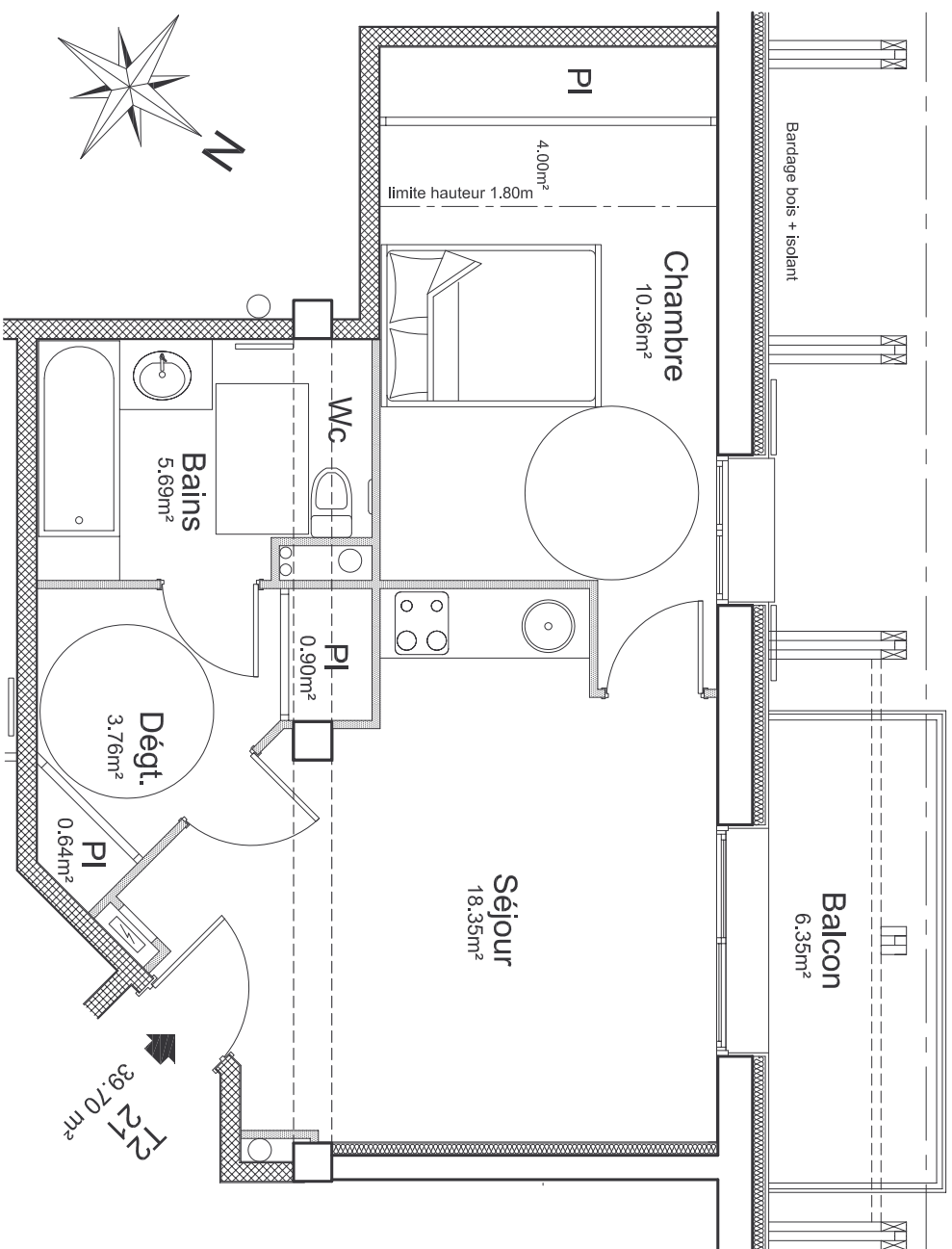


Chalet Perce-neige	Logement 21
3ème Etage	T2

TABLEAU DES SURFACES

3ème Etage	Habitable		Annexes
	H > 1.80 m ²	H < 1.80 m ²	
Séjour	18.35m ²		6.35m ²
Chambre	10.36 m ²	4.00m ²	
Salle de bains Wc	5.69 m ²		
Dgt	3.76 m ²		
Placards	1.54m ²		
Balcon			
Total	39.70 m²	4.00m²	6.35 m²



LOCALISATION BATIMENT

RESIDENCE DE TOURISME***

Le Pla d'Adet

65170 Saint Lary Soulan