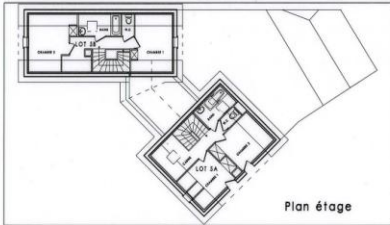
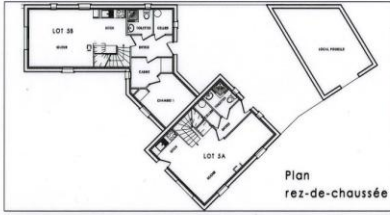
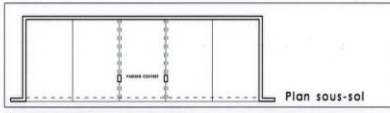




RESIDENCE "LES HAUTS DE VIGNEC"

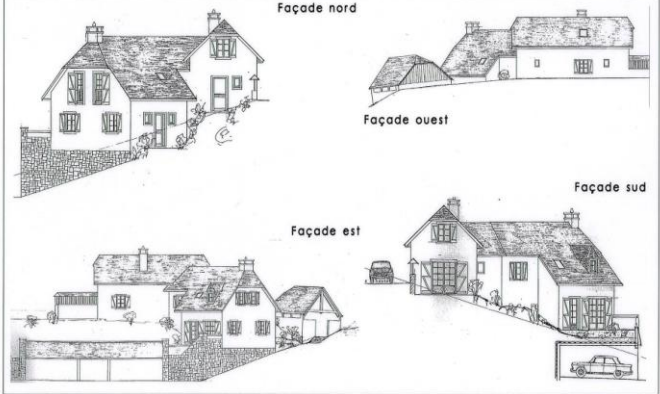
LOT 5

CELLULES	Surface habitable	Surface habitable
	Lot 5A	Lot 5B
MEZ-CLAUSSURE		
ENTREE	1.45m ²	4.45m ²
BLOUR	10.05m ²	17.65m ²
KITCHENETTE	4.05m ²	3.75m ²
TOLERTE	2.05m ²	3.35m ²
CELLER	3.05m ²	3.35m ²
RANGEMENT	1.05m ²	0.85m ²
DOUCHAGE		3.75m ²
CHAMBRE 1		8.45m ²
ETAGE		
CHAMBRE 1	4.15m ²	4.35m ²
CHAMBRE 2	3.45m ²	4.35m ²
BAINS	2.45m ²	2.85m ²
M.C.	0.75m ²	0.85m ²
RANGEMENT	1.45m ²	0.85m ²
DEGAGEMENT	3.35m ²	4.85m ²
SURFACE TOTALE	33.35m²	66.85m²
SURFACE TOTALE UTILE	43.95m²	78.65m²



Surfaces habitables

Plan de masse



DOCUMENT NON CONTRACTUEL
 La société se réserve la possibilité d'apporter des modifications qui seraient dues à des impératifs d'ordre technique, administratif ou normatif.