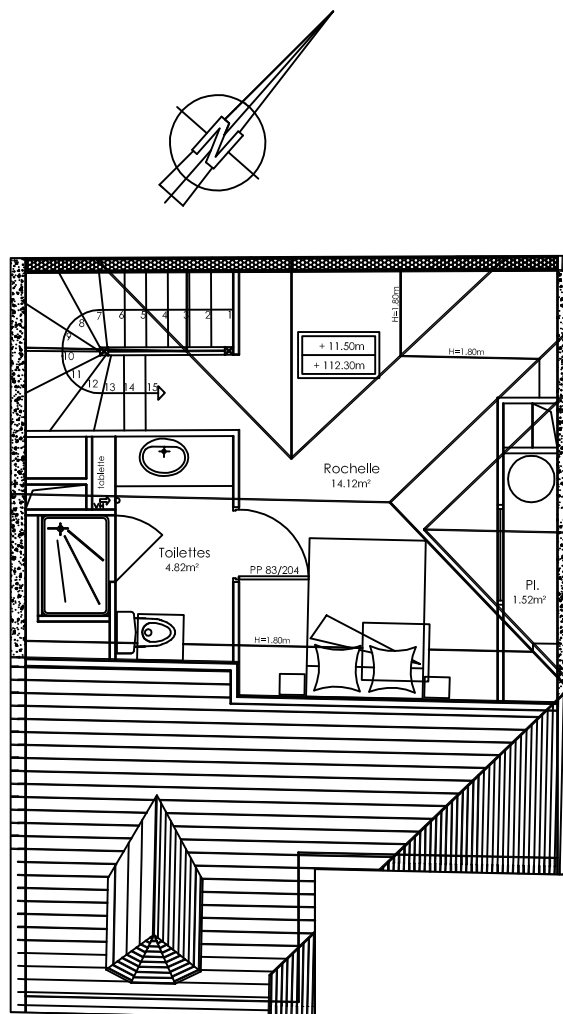
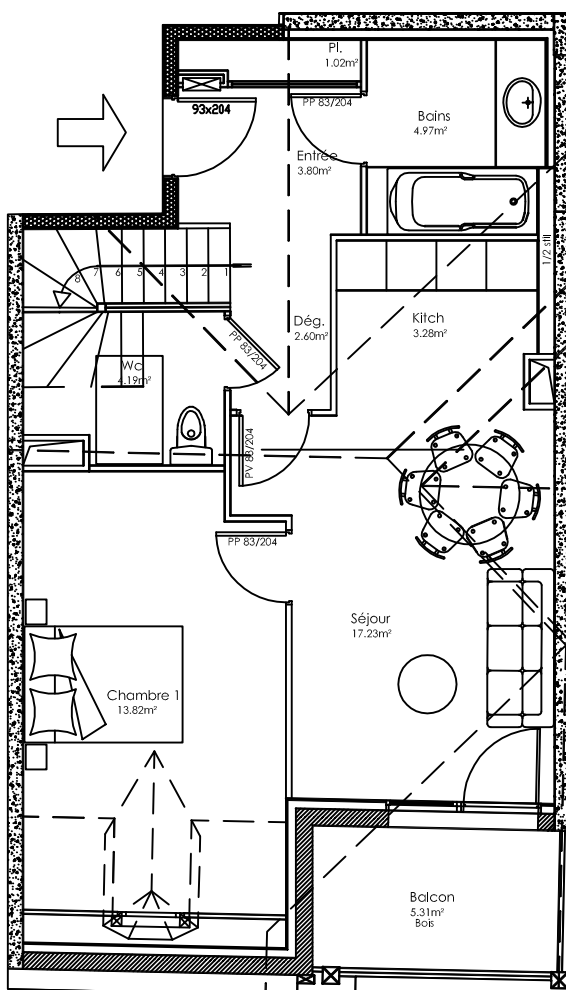


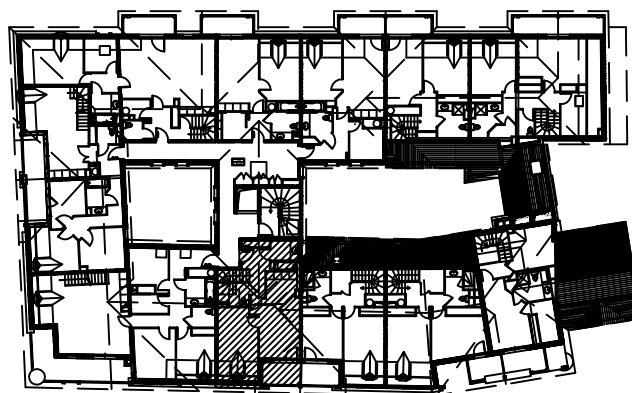
RESIDENCE Les Fermes de St Lary

65170 Saint Lary Soulan



Niveau R+3	Logement N23
	Type T3

N23	T3	
		HABITABLE ANNEXE
Entrée + Placard	4,82	
Bains	4,97	
Dégagement	2,60	
WC	4,19	
Kitch.	3,28	
Séjour	17,23	
Chambre 1	13,82	
Rochelle	14,12	
Placard	1,52	
Toilettes	4,82	
Balcon		5,31
TOTAL	71,37	5,31



LOCALISATION