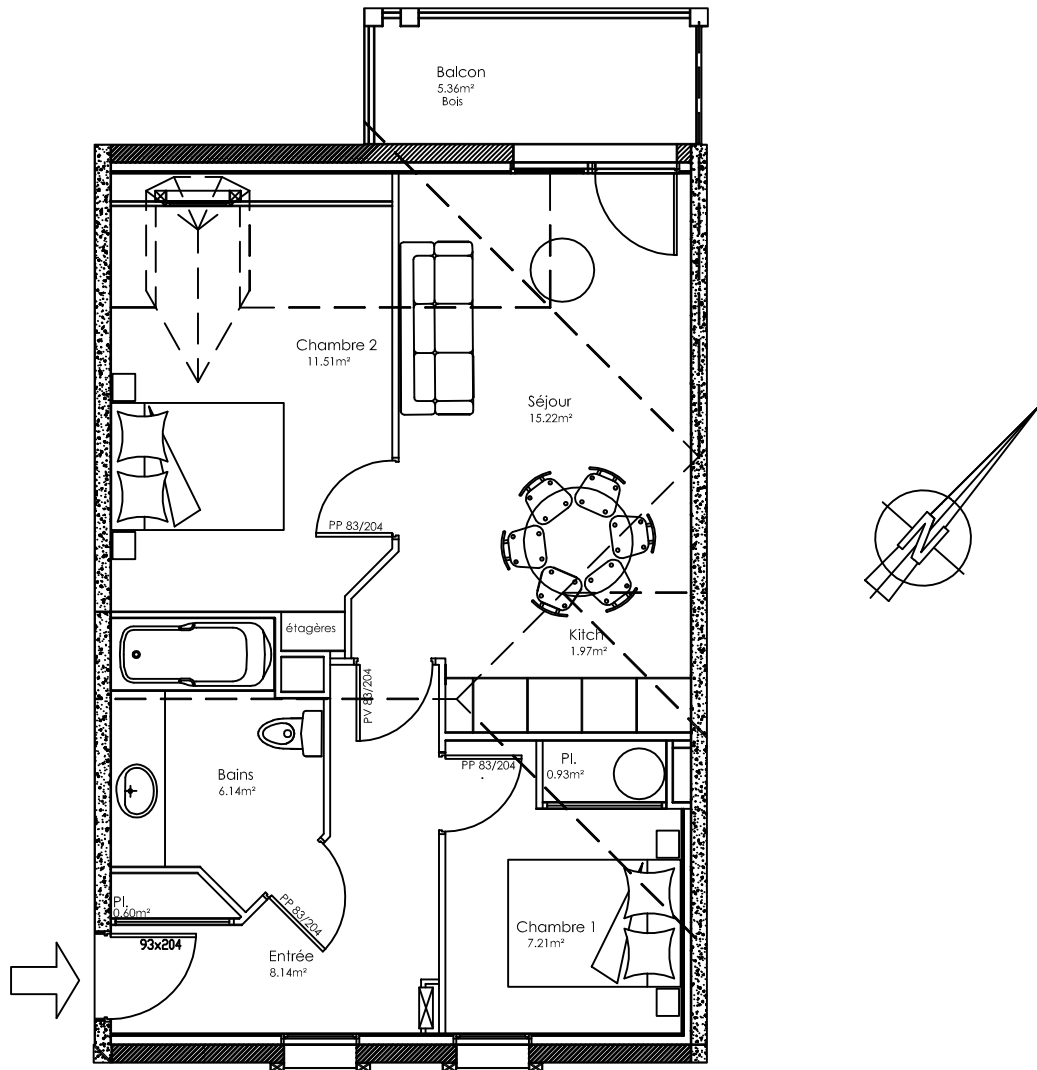


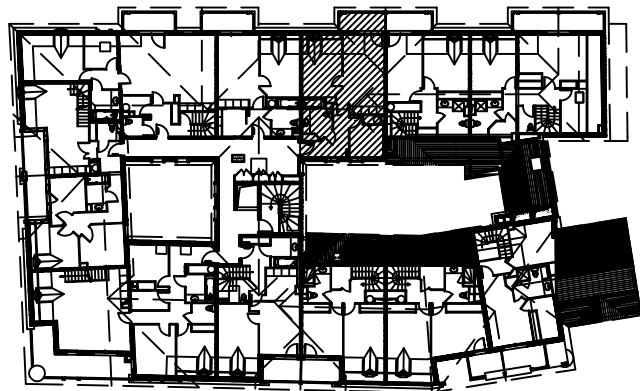
# RESIDENCE Les Fermes de St Lary

65170 Saint Lary Soulan



Niveau R+3	Logement N28
	Type T3

N28	T3	
	<b>HABITABLE ANNEXE</b>	
Entrée + Placard	8,74	
Bains	6,14	
Kitch.	1,97	
Séjour	15,22	
Chambre 1 + Placard	8,14	
Chambre 2 + étagère	11,51	
Balcon		5,36
<b>TOTAL</b>	<b>51,72</b>	<b>5,36</b>



LOCALISATION