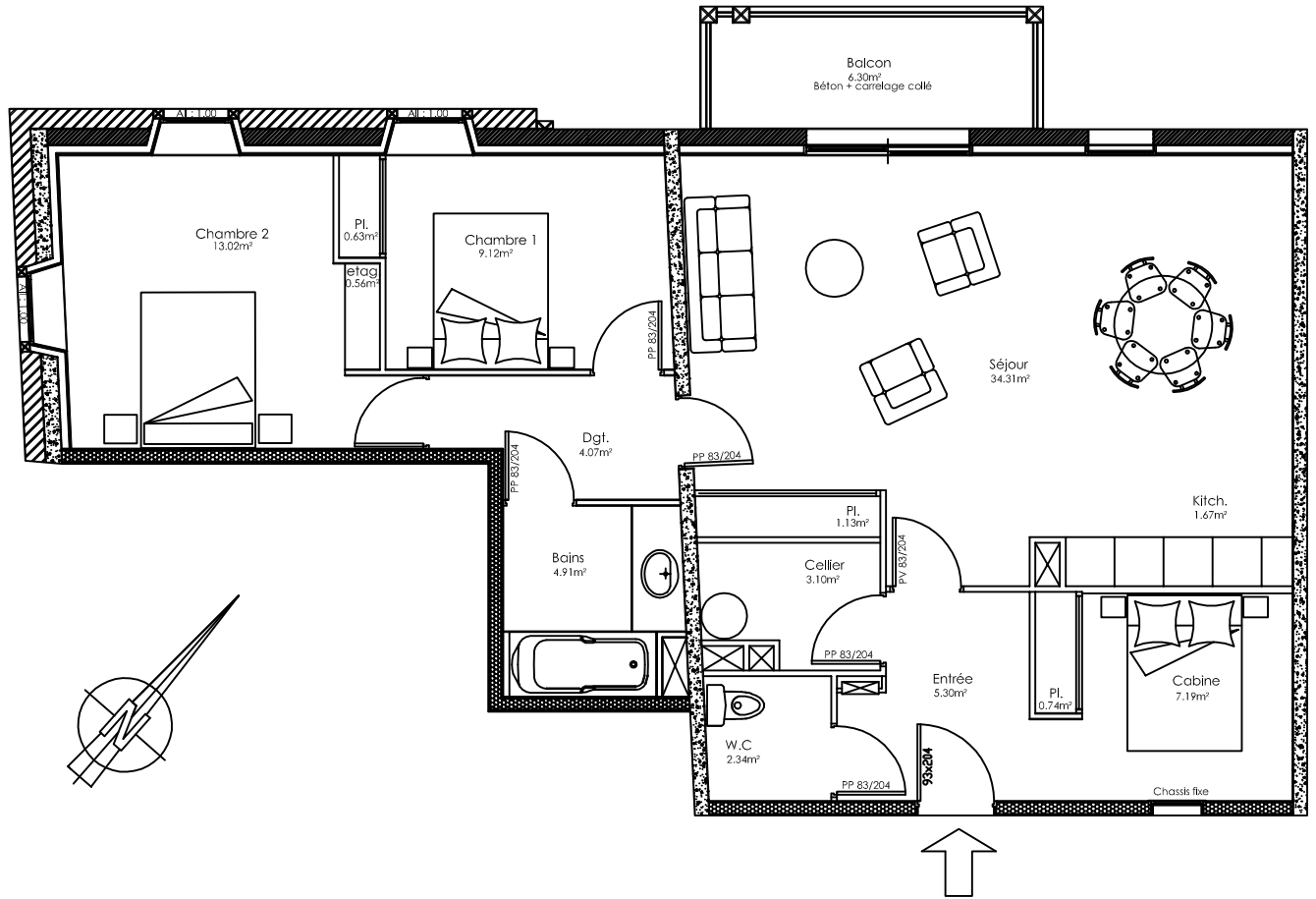


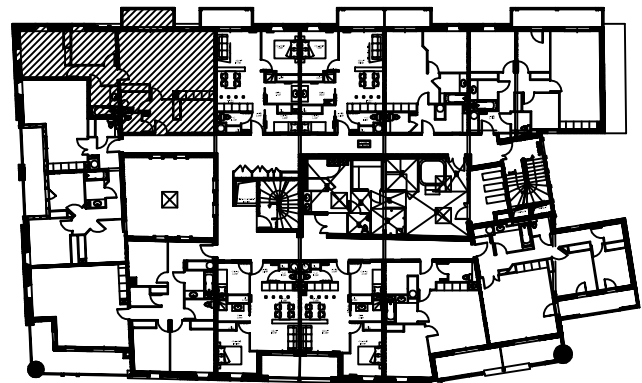
RESIDENCE Les Fermes de St Lary

65170 Saint Lary Soulan



Niveau R+1	Logement N7
	Type T3 Cab.

N7	T3 Cab.	
	HABITABLE	ANNEXE
Entrée	5,30	
Cabine + Placard	7,93	
WC	2,34	
Bains	4,91	
Kitch.	1,67	
Séjour + Placard	35,44	
Dgt.	4,07	
Cellier	3,10	
Chambre 1 + Placard	9,75	
Chambre 2 + Etagère	13,58	
Balcon		6,30
TOTAL	88,09	6,30



LOCALISATION