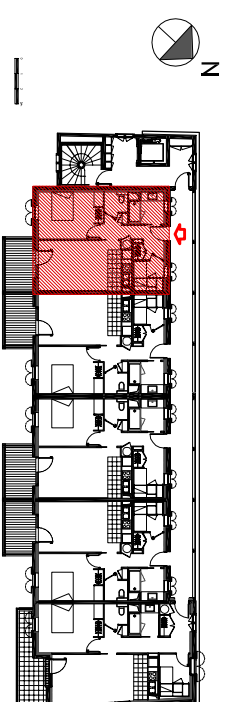
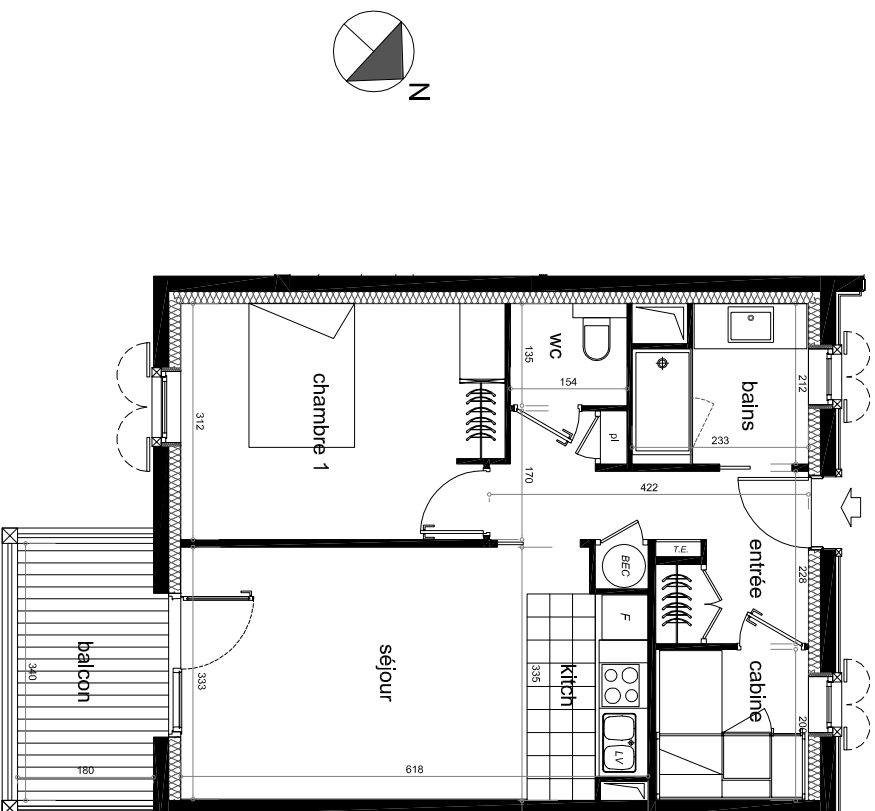


RESIDENCE  
**Le Petit Verger**  
65170 Saint Lary Soulan

Niveau R+1	<b>LOGEMENT N° 101</b>
Indice A - mai 2011	<b>Type 2 cabine</b>

sejour - kitchenette	20.00 m <sup>2</sup>
chambre	13.05 m <sup>2</sup>
cabine	4.05 m <sup>2</sup>
entrée	8.05 m <sup>2</sup>
bains	4.45 m <sup>2</sup>
WC	2.10 m <sup>2</sup>
<b>TOTAL SURFACE HABITABLE</b>	<b>51.70 m<sup>2</sup></b>
balcon	6.10 m <sup>2</sup>



LOCALISATION