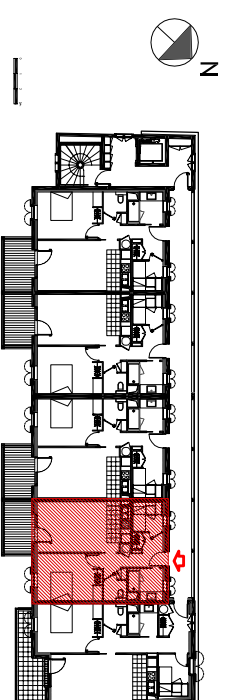
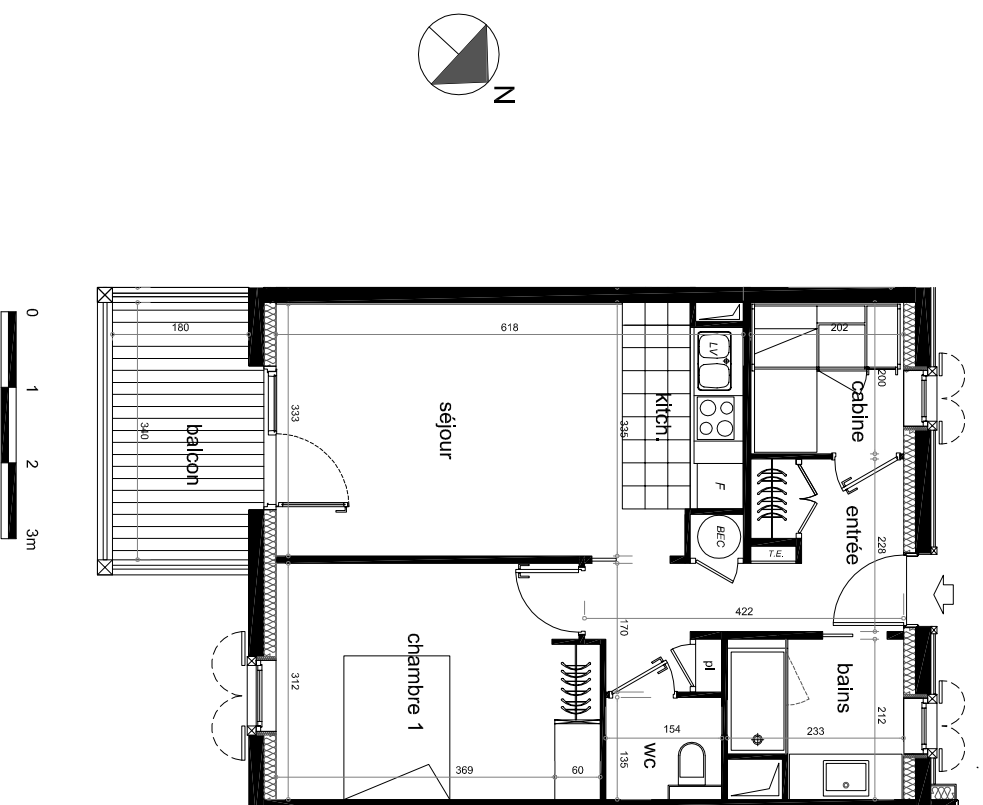


RESIDENCE
Le Petit Verger
65170 Saint Lary Soulan

Niveau R+1	LOGEMENT N° 104
Indice B - mai 2011	Type 2 cabine

séjour - kitchenette	20.00 m ²
chambre	13.05 m ²
cabine	4.05 m ²
entrée	8.05 m ²
bains	4.45 m ²
WC	2.10 m ²
TOTAL SURFACE HABITABLE	51.70 m²
balcon	6.10 m ²



LOCALISATION