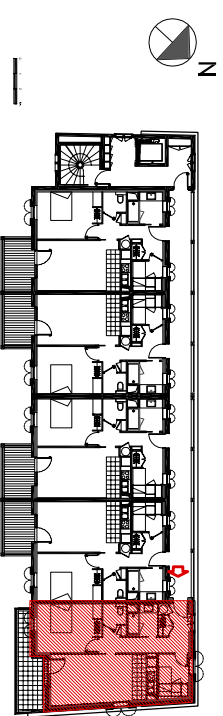
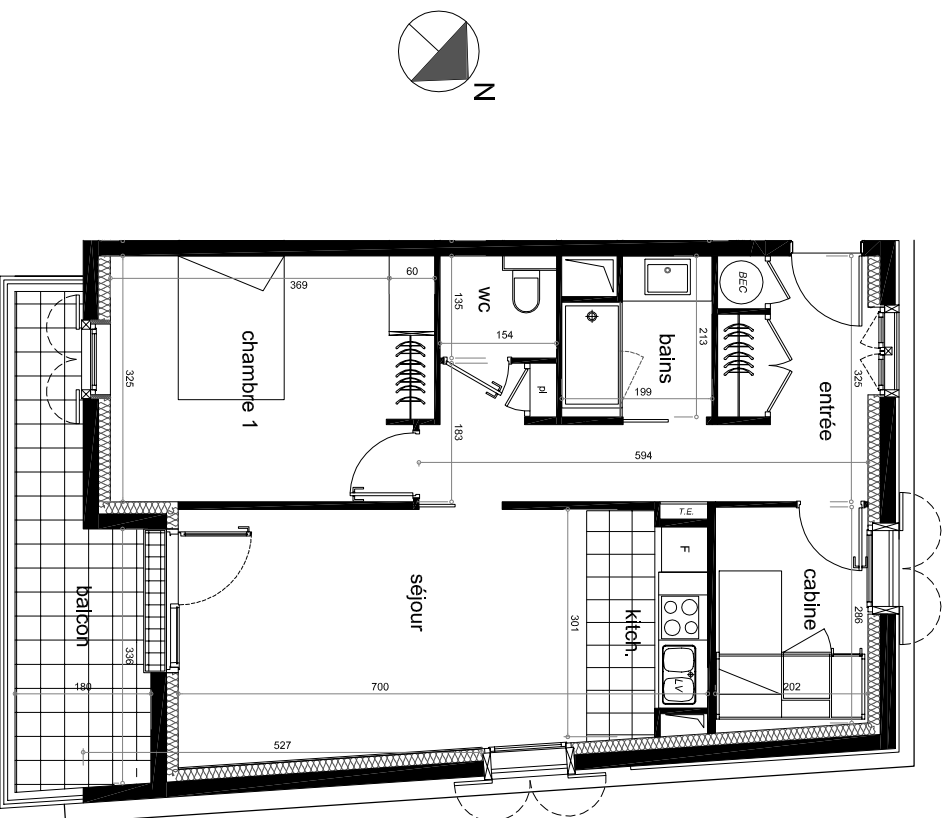


RESIDENCE
Le Petit Verger
65170 Saint Lary Soulan

Niveau R+1	LOGEMENT N° 105
Indice C - mai 2011	Type 2 cabine

séjour - kitchenette	22.00 m ²
chambre 1	13.60 m ²
cabine	5.90 m ²
entrée	11.60 m ²
bains	3.75 m ²
WC	2.10 m ²
TOTAL SURFACE HABITABLE	58.95 m²
balcon	8.75 m ²



LOCALISATION