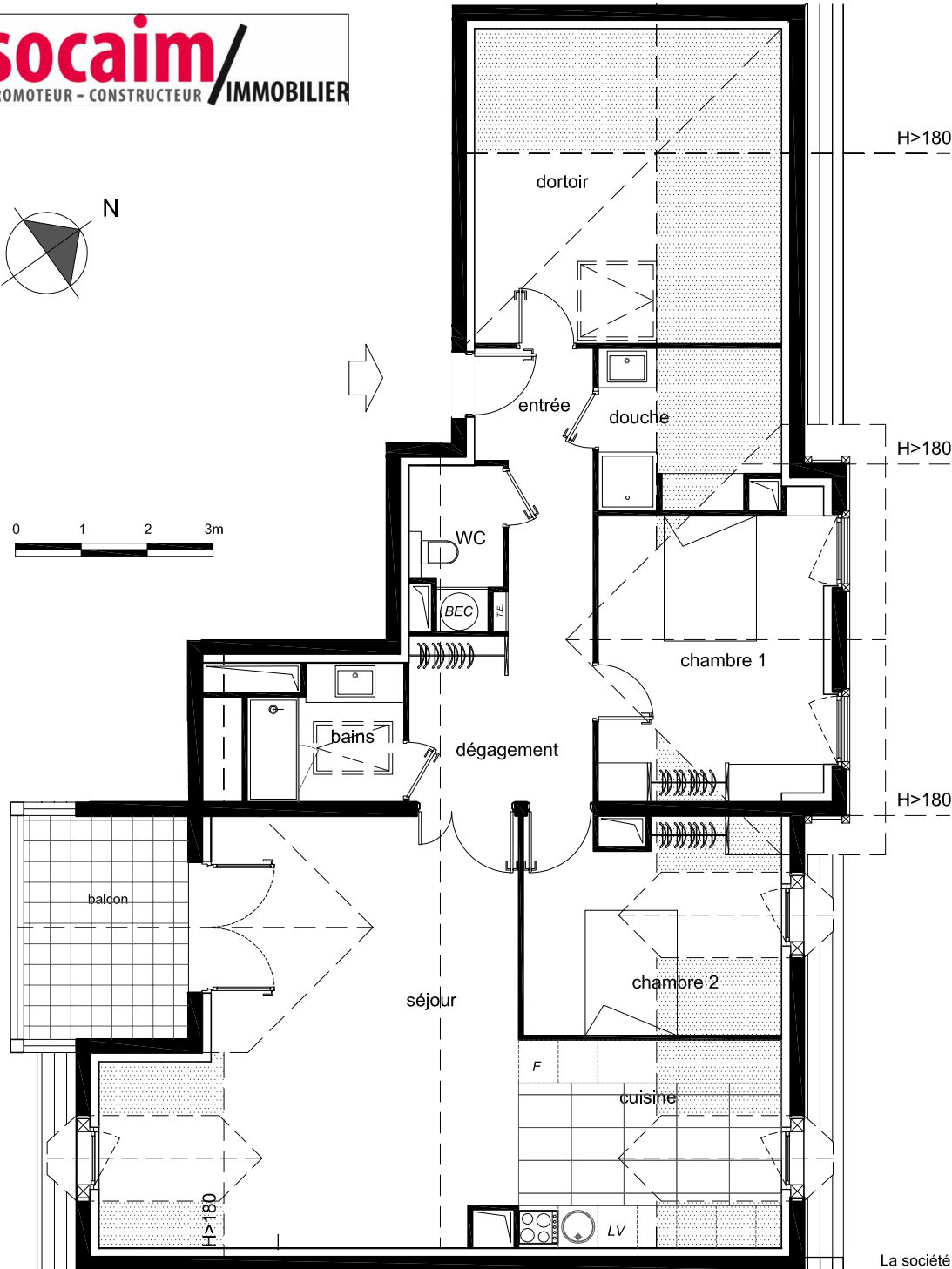
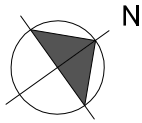
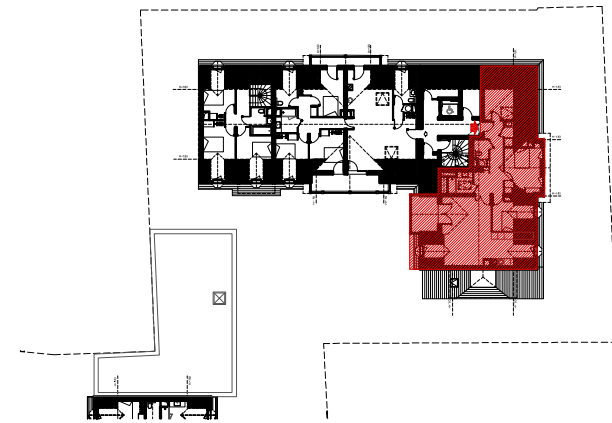


RESIDENCE
Les Jardins de la Pergola
65170 Saint Lary Soulan



BATIMENT B	
Niveau R+3	LOGEMENT N° 301
Indlce 1 - décembre 2012	Type 4

séjour	32.00 m ²
cuisine	9.10 m ²
chambre 1	14.30 m ²
chambre 2	8.80 m ²
dortoir	8.00 m ²
entrée	3.10 m ²
dégagement	10.50 m ²
salle de bains	4.40 m ²
douche	3.20 m ²
WC	3.10 m ²
TOTAL SURFACE HABITABLE	96.50 m²
balcon	8.50 m ²



LOCALISATION