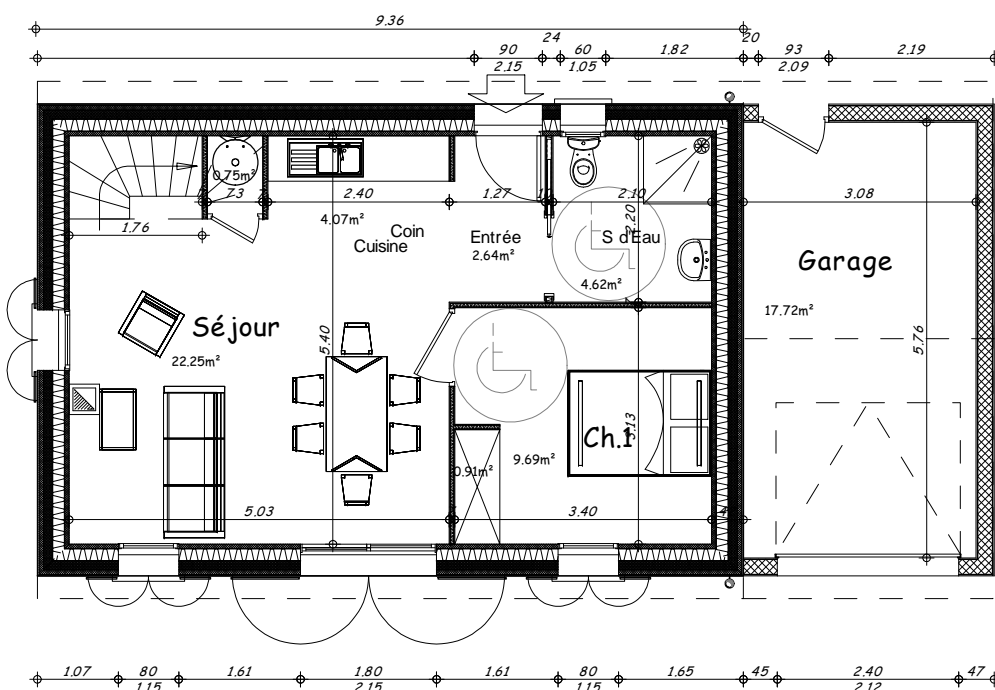


Plan Etage 1/100

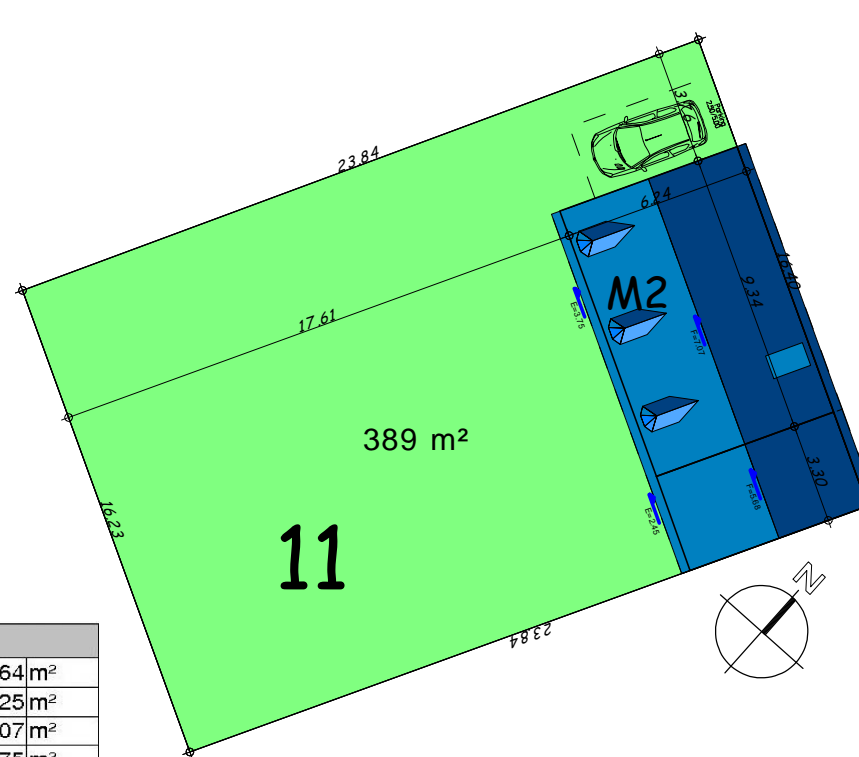


Plan Rez de Chaussée 1/100

REZ DE CHAUSSEE	
Entrée	2,64m ²
Séjour	22,25m ²
Cuisine	4,07m ²
PI Cumulus	0,75m ²
Chambre 1	9,69m ²
PI Ch	0,91m ²
Salle d'eau	4,62m ²
PI salle d'eau	0,00m ²
TOTAL RDC	44,93m²

ETAGE	
Dgt.	3,14m ²
PI dgt.	0,40m ²
PI dgt.	0,40m ²
Salle d'eau	3,34m ²
Chambre 2	8,07m ²
Chambre 3	7,56m ²
Détente	8,29m ²
PI Ch 2	0,72m ²
TOTAL ETAGE	31,92m²

SURFACE TOTALE HABITABLE	76,85m²
Garage	17,72m ²
SURFACE PARCELLE	389,00m²

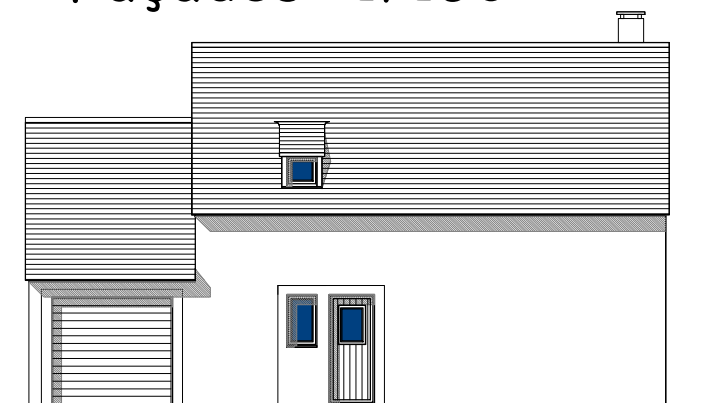


Plan de masse 1/250

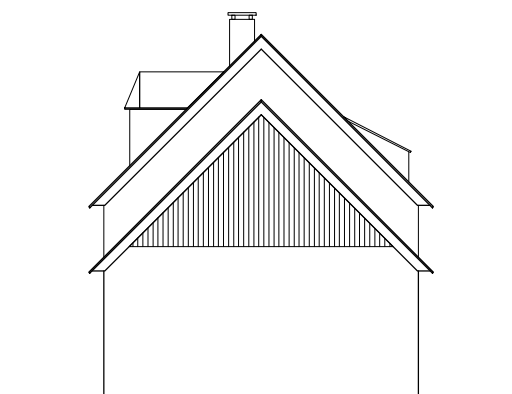


Sud Ouest

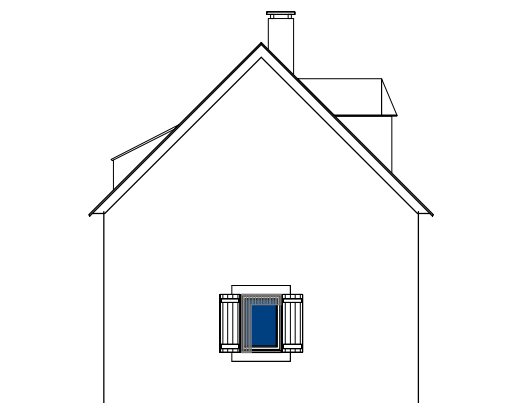
Façades 1/150



Nord Est



Sud Est



Nord Ouest