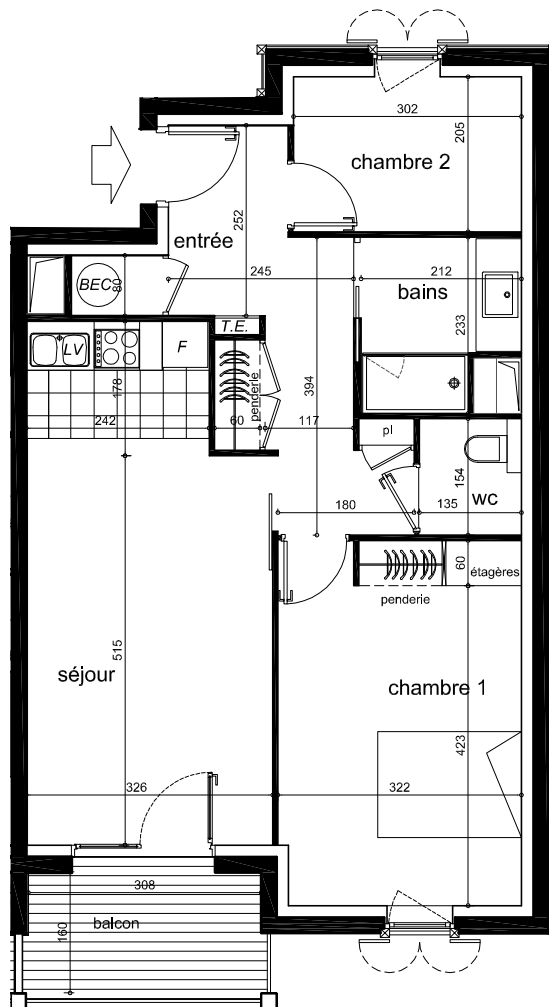
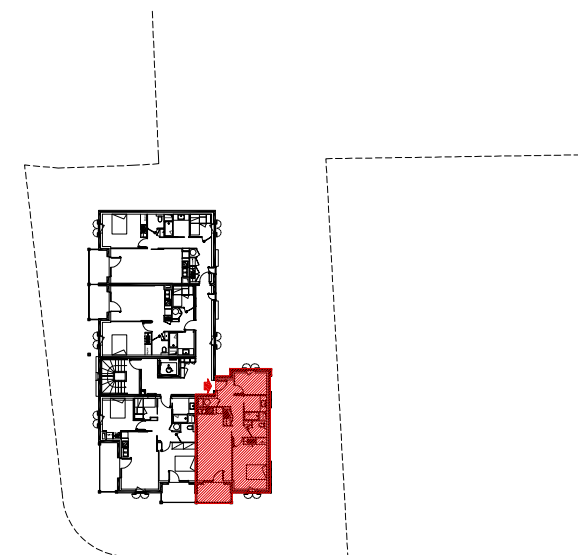
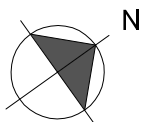


RESIDENCE
Les Jardins de la Pergola
65170 Saint Lary Soulan



BATIMENT A - LOT A1	
Niveau R+2	LOGEMENT N° 201 - TMA
Indice 4 - 27 janvier 2014	Type 3

séjour	21.10 m ²
chambre 1	15.40 m ²
chambre 2	6.20 m ²
entrée	11.30 m ²
salle de bains	4.40 m ²
WC	2.10 m ²
TOTAL SURFACE HABITABLE	60.50 m²
balcon	5.70 m ²



LOCALISATION